

**Fibulin-3 Polyclonal Antibody**  
**Catalog # AP69891****Specification**

---

**Fibulin-3 Polyclonal Antibody - Product Information**

Application	WB, IHC-P
Primary Accession	<a href="#">Q12805</a>
Reactivity	Human, Mouse, Rat
Host	Rabbit
Clonality	Polyclonal

**Fibulin-3 Polyclonal Antibody - Additional Information****Gene ID** 2202**Other Names**

EFEMP1; FBLN3; FBNL; EGF-containing fibulin-like extracellular matrix protein 1; Extracellular protein S1-5; Fibrillin-like protein; Fibulin-3; FIBL-3

**Dilution**

WB~~Western Blot: 1/500 - 1/2000. Immunohistochemistry: 1/100 - 1/300. ELISA: 1/10000. Not yet tested in other applications.

IHC-P~~N/A

**Format**

Liquid in PBS containing 50% glycerol, 0.5% BSA and 0.09% (W/V) sodium azide.

**Storage Conditions**

-20°C

**Fibulin-3 Polyclonal Antibody - Protein Information****Name** EFEMP1**Synonyms** FBLN3, FBNL**Function**

Binds EGFR, the EGF receptor, inducing EGFR autophosphorylation and the activation of downstream signaling pathways. May play a role in cell adhesion and migration. May function as a negative regulator of chondrocyte differentiation. In the olfactory epithelium, it may regulate glial cell migration, differentiation and the ability of glial cells to support neuronal neurite outgrowth.

**Cellular Location**

Secreted, extracellular space, extracellular matrix. Note=Localizes to the lamina propria underneath the olfactory epithelium {ECO:0000250|UniProtKB:O35568}

**Tissue Location**

In the eye, associated with photoreceptor outer and inner segment regions, the nerve fiber layer,

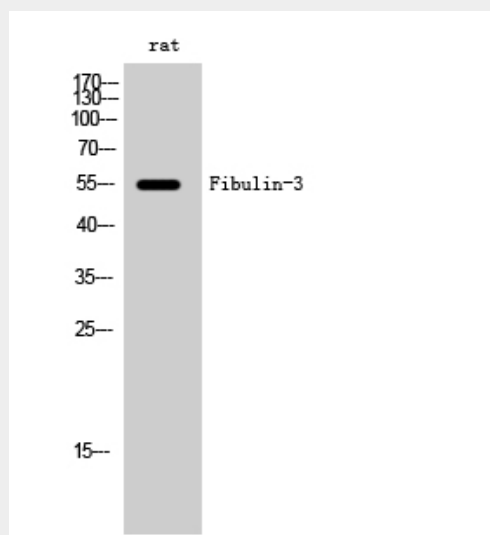
outer nuclear layer and inner and outer plexiform layers of the retina

### **Fibulin-3 Polyclonal Antibody - Protocols**

Provided below are standard protocols that you may find useful for product applications.

- [Western Blot](#)
- [Blocking Peptides](#)
- [Dot Blot](#)
- [Immunohistochemistry](#)
- [Immunofluorescence](#)
- [Immunoprecipitation](#)
- [Flow Cytometry](#)
- [Cell Culture](#)

### **Fibulin-3 Polyclonal Antibody - Images**



### **Fibulin-3 Polyclonal Antibody - Background**

Binds EGFR, the EGF receptor, inducing EGFR autophosphorylation and the activation of downstream signaling pathways. May play a role in cell adhesion and migration. May function as a negative regulator of chondrocyte differentiation. In the olfactory epithelium, it may regulate glial cell migration, differentiation and the ability of glial cells to support neuronal neurite outgrowth.